

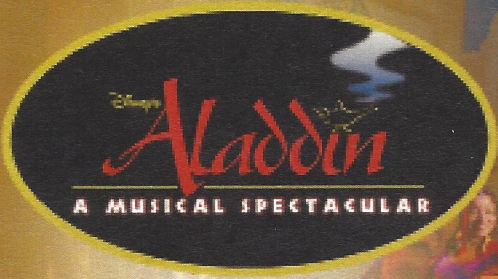
# PERSONAL NAVIGATOR

SUNDAY, SEPTEMBER 25, 2016

Sunrise 6:57 am Sunset: 6:47 pm  
Evening Attire: Formal

Today: Sunny High: 80°F/27°C  
Tomorrow: Sunny High: 82°F/28°C

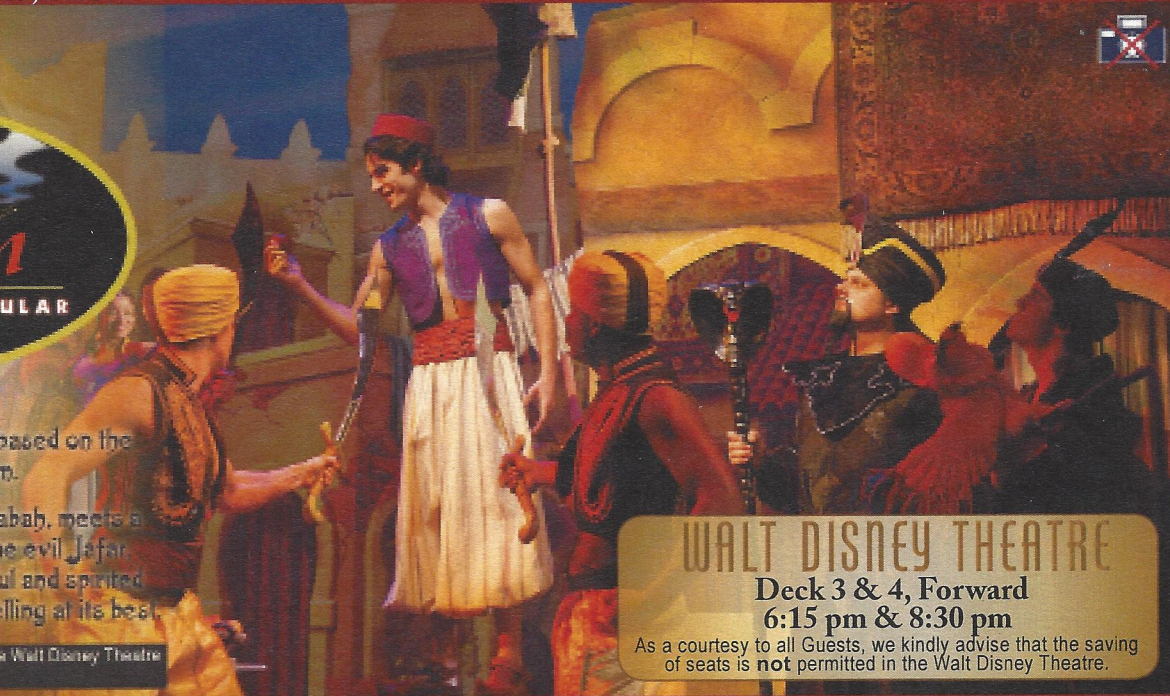
DAY AT SEA



A fast-paced, musical comedy based on the beloved animated film.

Aladdin, the "street rat" of Agrabah, meets a wise-cracking Genie, battles the evil Jafar, and falls in love with the beautiful and spirited Princess Jasmine. Disney storytelling at its best.

Assistance available at the entrance to the Walt Disney Theatre 30 minutes prior to show time.



WALT DISNEY THEATRE

Deck 3 & 4, Forward  
6:15 pm & 8:30 pm

As a courtesy to all Guests, we kindly advise that the saving of seats is not permitted in the Walt Disney Theatre.

## Disney FANTASY Fun Facts

**Tonnage:** 130,000 Gross Tons  
**Height:** 216 Feet  
**Length:** 1115 Feet

### Important Dates

**Name Announcement:** March 10, 2009  
**Steel Cutting:** March 16, 2010  
**Keel Laying:** February 11, 2011  
**Delivery:** February 9, 2012

Almost four football fields in length, the Disney Fantasy is longer than the height of the Eiffel Tower in Paris (1,063 feet). She is also longer than the height of New York City's famous Chrysler building (1,047 feet).

### The Disney Fantasy's Whistle

The Disney Fantasy's whistle, a prominent element of the "Sailing Away" deck party at the start of the cruise, is quite the musical talent. It's able to perform not just the first musical line of "When You Wish Upon a Star" but also the second line of the song ("makes no difference who you are") plus several measures of "Yo Ho (A Pirate's Life for Me)," "It's a Small World," "Be Our Guest," "Hi Diddle Dee Dee (An Actor's Life for Me)," "A Dream is a Wish," and "Do you want to build a Snowman".



### CAPTAIN'S RECEPTION

Enjoy live music and a cocktail while meeting some of the ship's officers.

Lobby Atrium, Deck 3, Midship,  
5:15 pm & 7:30 pm

Enjoy an exclusive photo opportunity with Captain Fabian at  
5:30 pm & 7:30 pm, Lobby Atrium

## Don't Miss:

### Good Morning Disney Fantasy

Channel 5 - Repeated from 5:00 am - 12:00 pm  
Tune in to channel 5 as your Cruise Director highlights the upcoming events and activities for the day.

### Anyone Can Cook: Lobster Ravioli (18+)

D Lounge, Deck 4, Midship - 2:15 pm  
From our galley to yours. Join our chefs as they show you how to prepare delicious dishes. Today's Menu - Lobster Ravioli.

### Variety Show: Magic Dave (18+)

The Tube, Deck 4, Aft - 9:45 pm & 10:45 pm  
Featuring the Magic & Comedy of Magic Dave, as he entertains you in this adult exclusive show.

### Formal Night After Party

D Lounge, Deck 4, Midship - 9:45 pm  
Join your Cruise Staff as we continue the party, with special appearances from the world famous Disney Characters.



### Welcome Aboard Photo Raffle

Stop at Shutters today before 11:00 am and drop of your raffle ticket, for a chance to win a 10 Digital Photo Package worth \$149.95.  
\*Terms & Condition apply.

## DINNER MENU

Animator's Palate : Pacific Rim Cuisine  
 Enchanted Garden : Continental Market Cuisine  
 Royal Court : French Cuisine

## DRINK OF THE DAY

Bahama Mama (Alcoholic)  
 Coco Bali (Non Alcoholic)

### IMPORTANT NUMBERS

Fire/Security: 7-3001  
 Medical Emergency: 7-3000  
 Health Center: 7-1923

## ADULT ACTIVITY HIGHLIGHTS

### SENSES SPA FITNESS CLASSES & SEMINARS



*Pure Form Pilates* - Donald's Pool - 7:00 am  
*Fab Abs* - Senses Fitness Center - 7:45 am  
*Body Sculpt Boot Camp* (Nom. Fee) - Senses Fitness Center - 8:30 am  
*Introduction to Acupuncture* - Senses Spa & Salon - 9:30 am  
*Detox for Health & Weight Loss* - Senses Spa & Salon - 10:30 am  
*How to Look Ten Years Younger Today* - Senses Spa & Salon - 11:30 am  
*Acupuncture Pain Relief* - Senses Spa & Salon - 1:00 pm  
*Seminar: Improving Your Posture-Walk in Comfort* - Senses Fitness Center - 2:00 pm  
*Seminar: Burn Fat Faster* - Senses Fitness Center - 2:30 pm  
*Non-Surgical Facelift Seminar* - Senses Spa & Salon - 3:15 pm  
*Tour De Cycle* (Sign-Up Required) - Senses Fitness Center - 4:00 pm  
*Acupuncture: Stress, Insomnia and Depression* - Senses Spa & Salon - 4:30 pm  
*Complimentary Footprint Analysis* - Senses Spa & Salon - 5:00 pm

### TASTING CLASSES

*Martini Tasting* (21+) - Meridian - 1:00 pm  
*Mixology* (21+) - Skyline - 4:00 pm  
*Tequila & Margarita Tasting* (21+) - Ooh La La - 4:30 pm  
*Whiskey Tasting* (21+) - Cove Cafe - 10:00 pm  
*Cognac Tasting* (21+) - Meridian - 10:30 pm  
 Please make reservations for tastings at Guest Services for a nominal fee.  
 Tasting Seminars are only for Guests 21 and older.

### 1820 SOCIETY: LUNCH

*Cabanas, Deck 11, Aft - 12:00 pm*  
 Get to know your fellow Society members over lunch.



### 1820 SOCIETY: MINI GOLF

*Goofy Golf, Deck 13, Aft - 3:45 pm*  
 Can you get a hole in one? Give it a try with some mini golf.

### 1820 SOCIETY: ICE CREAM SOCIAL

*Frozone Treats, Deck 11, Midship - 10:00 pm*  
 Join your fellow Society members for some ice cream and conversation.

### ART OF THE THEME SHOW TOUR

*Meridian, Deck 12, Aft - 9:00 am*  
 Join us for a guided tour highlighting the design, Imagineering and artistry of the ship. This tour is reserved for Guests 18 and over.



## FUN FOR ALL AGES HIGHLIGHTS

### WAKE UP WITH DISNEY JUNIOR



*D Lounge, Deck 4, Midship - 8:30 am*  
 What happens when you experience unlimited fun with your favorite Disney Junior shows? You get an exciting dance party designed especially for preschoolers ages seven and under.

### DISNEY ANIMATION: CREATING A CHARACTER



*D Lounge, Deck 4, Midship - 9:45 am*  
 Go behind the scenes at Walt Disney Animation Studios as Walt Disney himself talks about his most famous characters, then learn the basic techniques of drawing your favorite pals in this fun and interesting enrichment program.

### TODDLER TIME

*Outlook, Deck 14, Midship - 10:30 am & 1:00 pm*  
 Join us for some fun activities that your toddler is sure to enjoy.

### SENSES SPA BINGO



*Bingo Pre-Sales start at 11:00 am*  
*D Lounge, Deck 4, Midship - 11:15 am*  
 Four CASH prizes to be won! Plus great spa prizes that will pamper you, including a mini facial and massages all courtesy of the Senses Spa and Salon. Serenity now! Pre-Sales start 15 minutes prior to game.

### DISNEY VACATION CLUB GROUP PREVIEW



*D Lounge, Deck 4, Midship - 12:30 pm*  
 Want to learn more about taking magical vacations year after year? Please see a Disney Vacation Club representative on Deck 4, Midship, or call 7-2805 from your stateroom phone for more information about our interactive group presentation.

### MICKEY 200



*The Tube, Deck 4, Aft - 1:00 pm*  
 Don't eat your vegetables... race them in this wild and wacky charge to the finish line. May the best veggie win! (Limited Availability)



### CHIP-IT GOLF (12+)

*Lobby Atrium, Deck 3, Midship - 3:00 pm*  
 It's par for the course for our Guests 12 and older to compete on our special "greens" in this fun tournament.

### \$5,000 MEGA JACKPOT BINGO



*Bingo Pre-Sales start at 4:00 pm*  
*D Lounge, Deck 4, Midship - 4:15 pm*  
 Don't miss your chance to take home big money! 4 CASH prize games and great raffle prizes to be won! Complete the fourth game in 46 numbers or less and win the \$5,000 Mega Jackpot! Pre-Sales start 15 minutes prior to game.



### SO YOU THINK YOU KNOW YOUR FAMILY?

*D Lounge, Deck 4, Midship - 7:30 pm*  
 This fun-filled family game show is always full of surprises. Find out how well you know, or don't know your family!

# YOUTH ACTIVITIES HIGHLIGHTS

## DINE & PLAY

A convenience for families dining at 8:15 pm, our Youth Activities counselors will be available at 9:15 pm at the entrance of Royal Court, Enchanted Garden and Animator's Palate dining rooms to bring registered children to join the fun in the Youth Activity areas.



**Deck 5, Midship (7-1440)**  
(3-12 years old)

9:00 am - 12:00 am

### CRUISIN' WITH CRUSH

2:00 pm

Swim on by Disney's Oceaneer Club and join Crush in an undersea adventure you'll never forget.

### HEFFALUMP EXPODISHUN

4:30 pm

The Heffalump is missing! Help us find him before the Woozles do!



**Deck 5, Midship (7-1445)**  
(3-12 years old)

9:00 am - 12:00 am

### GET THE HOOK

3:15 pm

A villainous villain has stolen Captain Hook's prized golden hook. Become a member of the Top Deck Detective Agency and help solve the clues to retrieve Hook's hook.

### PISTON CUP CHALLENGE

10:00 pm

It's Dinoco time and you're part of the pit crew! Design your own race car and see if you've got what it takes to end up in the winner's circle!



**Deck 13, Midship (7-9743)**  
(11-14 years old)

9:00 am - 1:00 am

### BRAINS AND BRAWNS

2:30 pm

You will compete against each other to solve clues, take part in physical challenges, and reach the finish first.

### MAGIC SHOW

7:30 pm

The Magnificent Magician will demonstrate to you some of the best known magic tricks on the sea.



**Entrance on Deck 4, Forward (7-9418)**  
(14-17 years old)

9:00 am - 2:00 am

### ZOMBIFIED

12:00 pm

A big movie producer is looking for zombies to help him film the finale to his latest masterpiece, Zombified.

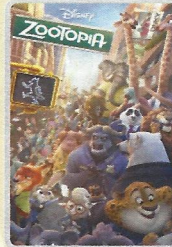
### SPORTS DECK FUN

1:00 am

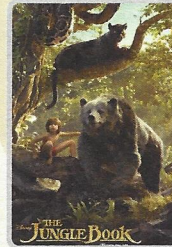
Take over the Sports Deck with some fun and friendly competition.

# BUENA VISTA THEATRE

Deck 4 & 5, Midship  
Today's Movies



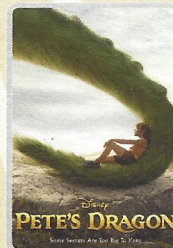
FAMILY MOVIE  
FUN TIME  
8:30 am  
Duration:  
1 hr 48 mins  
Rating: PG



**DOLBY 3D**  
12:30 pm  
Duration:  
1 hr 46 mins  
Rating: PG



3:00 pm  
Duration:  
1 hr 55 mins  
Rating: PG



5:45 pm & 8:15 pm  
Duration:  
1 hr 42 mins  
Rating: PG



**DOLBY 3D**  
10:30 pm  
Duration:  
2 hrs 27 mins  
Rating: PG-13

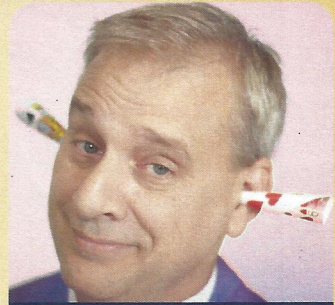


## FAMILY VARIETY ACT

Enjoy the Hypnosis and Comedy of Ricky Kalmon in this fun-filled show for the entire family.

**Walt Disney Theatre,  
Deck 3 & 4, Forward,  
2:00 pm**

(Doors open 15 minutes prior to show time)



## ADULT VARIETY ACT

Featuring the Magic & Comedy of Magic Dave, as he entertains you in this adult exclusive show.

**The Tube (18+),  
Deck 4, Aft,  
9:45 pm & 10:45 pm**

## YOUTH ACTIVITIES OPEN HOUSE

Open House is an opportunity for all to come and participate in a variety of exciting activities and free time in the Oceaneer Club, Oceaneer Lab, it's a small world nursery, Vibe and Edge throughout the cruise. During these times secured programming will still be offered in the other venue for those looking to check their children into care.

**Disney's Oceaneer Lab: 7:00 pm - 8:30 pm**

**Edge: 9:00 am - 10:00 am & 6:00 pm - 7:30 pm**  
**Vibe: 9:00 am - 10:00 am & 7:30 pm - 9:00 pm**

# MORE TO ENJOY WHILE ONBOARD

## EASTERN CARIBBEAN

Disney Cruise Line offers a variety of sailings to exotic ports in the Caribbean, including port of Tortola, in the British Virgin Islands. Most voyages even include a stop at Disney Castaway Cay. Visit the Disney Vacation Planning desk, Deck 4, Midship, for more information. Disney Vacation Planning tends to get busy on the last day of sailing. Don't miss the opportunity to plan your next Disney vacation.

## DISNEY VACATION CLUB® GROUP PREVIEW

Want to learn more about taking magical vacations year after year? Please see a Disney Vacation Club representative on Deck 4, Midship, or call 7-2805 from your stateroom phone for more information about our interactive group presentation.

## PORT SHOPPING INFORMATION

Join your Port Shopping Guide, Ana, to learn about the incredible shopping ashore this cruise! Everything will be covered from diamonds to t-shirts, Rolex to rum-cake. FREE charm bracelet for everyone who attends! Raffle to win OVER \$1000 in prizes & giveaways! 11:15 am, Buena Vista Theatre, Deck 4, Midship.

## Connect @ Sea

We are now offering a NEW and improved Internet service to stay connected on your cruise like no other in the industry! Internet packages range from \$0.25 per MB - \$89.00 (1000 MB package). For more information contact your Connect@Sea Expert or Guest Services onboard.

## ONBOARD AIRLINE CHECK IN

Stop by the Guest Services Desk, Deck 3, Midship to find out about enrolling in our Onboard Airline Check In Service.



## CASTAWAY CAY 5K REGISTRATION (10+)

Sign up today for the Castaway Cay 5K! Please visit the Port Adventures Desk or the Guest Services Desk to register at any time prior to our arrival at Disney Castaway Cay. Please note that runners must be 10 years of age or older to participate.



## MIDSHIP DETECTIVE AGENCY

The puppies from 101 Dalmatians have gone missing! Use your special detective "badge" to track down the puppies and catch the villain who took them. Decks 2 & 5, Midship.



Port Adventures provide you and your family with the very best recreation, leisure and sightseeing in Tortola, St. Thomas and Castaway Cay. Whether exploring the Baths on Virgin Gorda, exploring coral reefs on the Captain Nautica Snorkeling Expedition, flying high on a parasailing adventure or just kicking back and relaxing on an Island tour. Whatever it is you choose to do, there is adventure waiting for you in each port.

Visit the **Port Adventures Desk, Deck 5, Midship**, for more information.

## SHOPPING

### BIBBIDI BOBBIDI BOUTIQUE

Young Princesses and Princes can get ready for a formal evening with a makeover at the Bibbidi Bobbidi Boutique. Make your reservations by visiting Bibbidi Bobbidi Boutique, Deck 5, Midship or dialing extension 7-9438. Limited space available.

### COLLECT YOUR DISNEY CRUISE LINE MEMORIES

Store the many happy memories you've photographed while on your Disney cruise inside a 2016 Disney Cruise Line photo album and scrapbook, available in Mickey's Mainsail, Deck 3, Forward.

### ALEX AND ANI DISNEY CRUISE LINE LOGO BRACELET

Head over to Sea Treasures to pick up the Alex and Ani Disney Cruise Line Logo bangle designed specially for Disney Cruises. Deck 3, Midship.

### THOMAS KINKADE: HIDDEN CHARACTER CHALLENGE!

Known as the "Painter of Light," Thomas Kinkade is one of Disney's most celebrated artists having created an array of enchanting artwork. Stop by the Vista Gallery today to view his unique collection of paintings featuring some of your favorite Disney characters! Also, take the time to try and find all of the hidden Disney characters scattered throughout his paintings. Are you up to the challenge? Deck 4, Midship.

### TAG HEUER TIMEPIECES

Define the time-honored conventions of Swiss watchmaking with the latest releases from TAG Heuer. Find classic timepieces and more at White Caps, Deck 3, Forward.



## SENSES SPA & SALON ONBOARD ACUPUNCTURE

Acupuncture is safe and effective medicine that allows your body to heal itself. It is painless, deeply relaxing and rejuvenating for mind and body, and is effective for various health conditions.

See your onboard Acupuncturist for your complimentary consultation.

Senses Spa & Salon, Deck 11, Forward, Extension 7-1465

## Onofrio D. Oro on Fifth

- Fine Jewelry -

Discover the beautiful nature-inspired fine jewelry collection by Onofrio D. Oro



White Caps  
Deck 3, Forward

## Shutters

## FORMAL PORTRAITS TONIGHT!

Now that the family is dressed up and ready to enjoy the evening, capture the memories in your formal attire by visiting our professional portrait studios located in the Lobby Atrium, Deck 3, Midship.

5:15 pm - 6:00 pm  
7:15 pm - 8:30 pm  
9:30 pm - 10:15 pm

\*Please note that photos are available for viewing on our interactive photo kiosks approximately five hours after being taken and are only available for purchase during this cruise. Photo sizes are preset and cannot be changed.

## IMPORTANT INFORMATION

### Security Notice

All Guests (including children) who wish to disembark the ship are required to present their Key to the World card at the gangway. A photo ID is also required for those Guests who are 18 years of age or older. Guests under the age of 18 are required to have a parent, guardian, or other responsible adult sign an authorization form at the Guest Service Desk if they wish to go ashore unaccompanied or with any adult from another stateroom.

### Insect Repellent Advisory

Protect against mosquito bites and related illnesses when going ashore. Insect repellent is available for purchase in White Caps. When using both sunscreen and insect repellent, use sunscreen first and apply insect repellent on top of sunscreen.

### Cold and Flu Reminder

Please wash hands frequently and thoroughly, particularly before meals. Contact the Health Center by dialing 7-1923, should anyone in your party become ill.

### Corridor Quiet Hours

As a courtesy to all our Guests, please recognize quiet hallway hours from 10:00 pm til 8:00 am

### Inclement Weather

For the safety of all Guests, outdoor events may be changed due to unforeseen weather conditions.

### Environmental Message

With Disney's commitment to the Environment, please refrain from throwing anything over the Ship's side. Thank you!

### No Reserved Seats Policy

As a courtesy to all our Guests, we kindly advise that the saving of seats is not permitted in the Walt Disney Theatre, and the saving of the sun loungers is not permitted on Deck 11, 12, and 13. Items left unattended will be returned to lost and found at Guest Services, Deck 3 Midship.

### Smoking

For the comfort of our Guests, the following areas are designated as smoking areas:  
 \*Deck 13, forward, port side by Currents  
 \*Deck 12, aft, port side outdoor area that is accessible through the Meridian Lounge  
 \*Deck 4, aft, port side from 6:00 pm to 6:00 am only (all of Deck 4 is non-smoking from 6:00 am to 6:00 pm)  
 Smoking is prohibited inside all Guest staterooms and on stateroom verandahs. Guests found smoking in their staterooms or on their verandahs will be charged a \$250 stateroom recovery fee. Electronic cigarettes may only be used in designated smoking areas.

### Walt Disney Theatre

Theatrical performances may use artificial fog, strobe lights, pyrotechnics and other special effects. For the safety of our performers and the comfort of those around you, the use of any photography, video recording device or any electronic equipment is prohibited.

### Verandah Safety

Please do not leave any combustible materials on your balcony when not present in your stateroom for safety reasons.

Morning	8:30	8:45	9:00	9:15	9:30	9:45	10:00	10:15	10:30	10:45	11:00	11:15	11:30	11:45	12:00	12:15	12:30	12:45	1:00	1:15	1:30			
FUNNEL VISION	A Goofy Movie (G) Funnel Vision						Frozen (PG) Funnel Vision						Movie Challenge Poolside Funnel Vision											
BUENA VISTA THEATRE	Family Movie Fun Time: Zootopia (PG) Duration: 1 Hour 48 Minutes												Port Shopping Talk			The Jungle Book (2016) (PG) <b>DOLBY 3D</b> Duration: 1 Hour 46 Minutes								
CHARACTERS	Minnie Dk 4, Balcony		Woody Lobby Atrium (V)		Jessie Lobby Atrium (V)		Pluto Dk 4, Balcony		Woody Lobby Atrium (V)		Jessie Lobby Atrium (V)		Donald Dk 4, Balcony		Peter Pan Dk 4, Balcony		Jake Dk 4, Balcony							
FUN FOR ALL AGES			Crafts: 3D Crafts La Piazza				Disney Trivia La Piazza		Bingo Pre Sales															
ADULTS	Friends of Bill W. Outlook		Art of The Theme Show Tour Meridian				Pub Quiz O'Gills Pub		Crafts: Tile Coasters O'Gills Pub		ESPN Dream Team Draft Day - Baseball O'Gills Pub		Port Shopping Talk Buena Vista Theatre		1820 Society: Lunch Cabanas		Cruisin' Solo Lunch Royal Court							
VIBE 14-17 YEARS OLD	Boot Camp (Nom. Fee) Senses Fitness Center		Youth Activities Open House				Open for Teens		Coffee Break		Disney Scene It				Zombified									
EDGE 11-14 YEARS OLD			Youth Activities Open House				GAGA Ball				Disney Animation: Creating a Character				Guesstures								Marshmallow Olympics	
OCEANEER LAB 3-12 YEARS OLD			Stitch's Adventure Squad				Super Sloppy Science				Wacky Relays												Magic PlayFloor	
OCEANEER CLUB 3-12 YEARS OLD			Pre-School Fun (3-5 Years Old)				Magic Show				Aloha Luau				Lunch								Mickey's Puzzle Playtime	
			Little Einstein's Adventure																					

Afternoon	1:45	2:00	2:15	2:30	2:45	3:00	3:15	3:30	3:45	4:00	4:15	4:30	4:45	5:00	5:15	5:30	5:45	6:00	6:15	6:30	6:45			
FUNNEL VISION													NFL Football Funnel Vision											
BUENA VISTA THEATRE							The BFG (PG) Duration: 1 Hour 55 Minutes						Pete's Dragon (PG) Duration: 1 Hour 42 Minutes											
CHARACTERS	Doc McStuffins Dk 4, Balcony		Minnie Dk 4, Balcony		Goofy Dk 4, Balcony		Mickey & Minnie Dk 4, Balcony		Chip & Dale Preludes		Goofy Preludes													
FUN FOR ALL AGES					Ice Breakers The Tube		Bingo Pre Sales				Captain's Welcome Reception Lobby Atrium		Live Music with The Royal Duo Lobby Atrium											
ADULTS	Crafts: Origami Creations La Piazza		Who Am I? The Tube		Disney Tunes Trivia La Piazza				Family Crafts La Piazza		Live Music with Daria & Roberto La Piazza		Disney Animation D Lounge											
VIBE 14-17 YEARS OLD					1820 Society: Mini Golf Goofy Golf				Ultimate Disney Trivia O'Gills Pub		Footprint Analysis Senses Spa & Salon													
EDGE 11-14 YEARS OLD	Zombified		Dive into DJ'ing		Scavenger Hunt				ESPN Dream Team Draft Day - Football		Foosball Tournament		Brain Teasers											
OCEANEER LAB 3-12 YEARS OLD	Craft Corner		Brains and Brawns		Anyone Can Cook				Sports Deck Fun		Youth Activities Open House													
OCEANEER CLUB 3-12 YEARS OLD	Anyone Can Cook		Get the Hook		Four Square		Disney Animation: Creating a Character				Pathfinders													
	Cruisin' with Crush		Scavenger Hunt		Tinker Bell's Talent Show		Heffalump Expodishun				Dinner													

Evening	7:00	7:15	7:30	7:45	8:00	8:15	8:30	8:45	9:00	9:15	9:30	9:45	10:00	10:15	10:30	10:45	11:00	11:15	11:30	11:45	12:00			
FUNNEL VISION	NFL Football Funnel Vision																							
BUENA VISTA THEATRE							Pete's Dragon (PG) Duration: 1 Hour 42 Minutes						Captain America: Civil War (PG-13) <b>DOLBY 3D</b> Duration: 2 Hours 27 Minutes											
CHARACTERS	Mickey Mouse Dk 4, Balcony		Minnie Mouse Preludes		Mickey & Minnie Dk 4, Balcony		Donald Preludes		Daisy Preludes															
FUN FOR ALL AGES	Family Dance Party The Tube		Captain's Welcome Reception Lobby Atrium				Formal Night After Party D Lounge																	
ADULTS	So You Think You Know Your Family? D Lounge		Disney Animation D Lounge				Live Music with Daria & Roberto Lobby Atrium		Live Music with Daria & Roberto Lobby Atrium															
VIBE 14-17 YEARS OLD	50's and 60's Music Trivia O'Gills Pub		Beatles Tribute with Aaron Lotzow La Piazza				Club DJ Pulse The Tube		Team Trivia O'Gills Pub		The Quest The Tube		Variety: Magic Dave The Tube		Variety: Magic Dave The Tube		Going Underground with Club DJ Pulse The Tube		Live Piano with Aaron Lotzow La Piazza					
EDGE 11-14 YEARS OLD	Youth Activities Open House		Wii Challenge				That's Hilarious		Gender Wars															
OCEANEER LAB 3-12 YEARS OLD	Open House		Magic Show				Pictionary		Video Game Challenge		Gender Wars		Tween Choice											
OCEANEER CLUB 3-12 YEARS OLD	Youth Activities Open House		Lights, Camera, Improv!				Piston Cup Challenge																	
	Anyone Can Cook																							
	Dress Up Fun		Once Upon a Time				Magic PlayFloor		Pluto's Pajama Party		Cartoon Time													

Symbol for activities that will be repeated during the cruise



FOLD

Fold along the dotted lines and take me with you so you don't miss any of the fun!

FOLD

**YOUTH ACTIVITIES OPEN HOUSE**  
 A non-secured program with activities for families, adults and children to enjoy together.



SUNDAY, SEPTEMBER 25, 2016 - DAY AT SEA

# BUENA VISTA THEATRE

Deck 4 & 5, Midship

	<b>ZOOKEEPER</b> Family Movie Run Time: 8:30 am Duration: 1 hr 48 mins Rating: PG		<b>DADDY DAY CAMP</b> Duration: 1 hr 46 mins Rating: PG		<b>BFG</b> Duration: 3:00 pm Rating: PG		<b>PETER'S DRAGON</b> Duration: 5:45 pm Rating: PG		<b>DADDY DAY CAMP</b> Duration: 10:30 pm Rating: PG-13
--	---	--	---	--	---	--	--	--	--

## Character Appearances

<b>MINNIE MOUSE</b> Deck 4, Balcony 9:00 am & 3:00 pm Preludes - 7:30 pm	<b>PRINCESS TIANA</b> Preludes - 9:15 am & 10:15 am	<b>WOODY</b> Lobby Atrium (V) 9:15 am & 10:15 am	<b>DONALD DUCK</b> Deck 4, Balcony - 11:00 am Preludes - 9:30 pm	<b>MICKEY MOUSE</b> Deck 4, Balcony - 11:30 am, 3:30 pm & 7:30 pm	<b>PETER PAN</b> Deck 4, Balcony - 12:00 pm	<b>CAPTAIN HOOK</b> Deck 4, Balcony - 12:30 pm	<b>JAKE THE NEVERLAND PIRATE</b> Deck 4, Balcony - 1:00 pm	<b>PRINCESS SOFIA</b> Deck 4, Balcony - 1:30 pm	<b>DOC MCSTUFFINS</b> Deck 4, Balcony - 2:00 pm	<b>STITCH</b> Deck 4, Balcony - 2:30 pm	<b>GOOFY</b> Deck 4, Balcony 10:30 am & 4:00 pm Preludes - 6:00 pm	<b>MICKEY &amp; MINNIE</b> Deck 4, Balcony 5:15 pm & 9:30 pm	<b>CHIP &amp; DALE</b> Preludes - 5:30 pm
---	--	--	--	---	--	---	---	--	--	--	---	--	--

(H) Hallway - (S) Starboard Side - (P) Port Side - (V) Vestibule  
 For details of daily Disney character appearances, refer to the character line on your Navigator Grid, or the digital character board in the Lobby Atrium.

**IMPORTANT NUMBERS**  
 Medical Emergency: 7-3000  
 Health Center: 7-1923

## SHIP DIRECTORY

DISNEY'S OCEANEEER CLUB	DECK 5, MID	9:00 AM - 12:00 AM
DISNEY'S OCEANEER LAB	DECK 5, MID	9:00 AM - 12:00 AM
EDGE	DECK 13, MID	9:00 AM - 1:00 AM
VIBE	DECK 4, FWD	9:00 AM - 2:00 PM
IT'S A SMALL WORLD NURSERY	DECK 5, MID	9:00 AM - 11:30 AM

POOLS & MORE	DECK 12, MID	9:00 AM - 10:00 PM
AQUA DUCK	DECK 12, MID	9:00 AM - 6:00 PM
AQUA LAB	DECK 11, MID	9:00 AM - 10:00 PM
DONALD'S POOL	DECK 11, MID	9:00 AM - 10:00 PM
MICKEY'S POOL	DECK 11, MID	9:00 AM - 10:00 PM
MICKEY'S SLIDE	DECK 11, MID	9:00 AM - 6:00 PM
NEMO'S REEF	DECK 11, MID	9:00 AM - 6:00 PM
QUIET COVE POOL (18+)	DECK 11, FWD	8:00 AM - 11:00 PM
SATELLITE FALLS (18+)	DECK 13, FWD	6:00 AM - 8:00 PM

\* Children under 12 must have adult supervision in pool areas.  
 Please note, "selfie sticks" are not permitted in the pools or on the slides.  
 Complimentary pool vests are available for children to use in the pools onboard.  
 They are located on the pool deck.

## RECREATION

GOLE/SPORTS SIMULATORS	DECK 13, AFT	9:00 AM - 6:00 PM
GOOFY GOLF	DECK 13, AFT	8:00 AM - 10:00 PM
GOOFY'S SPORTS DECK	DECK 13, AFT	8:00 AM - 6:00 PM
MILSHIP DETECTIVE AGENCY	DECKS 2 & 5, MID	9:00 AM - 10:00 PM
PORT ADVENTURES DESK	DECK 5, MID	9:00 AM - 5:00 PM
SENSSES FITNESS CENTER (18+)	DECK 11, FWD	7:00 PM - 8:30 PM
<b>(GENERAL INFORMATION)</b>		
ARR-CADE	DECK 11, AFT	24 HOURS
CONNECT@SEA	DECK 4, MID	9:00 AM - 12:00 PM
		1:00 PM - 4:00 PM
		7:00 PM - 10:00 PM
DISNEY VACATION CLUB	DECK 4, MID	9:00 AM - 11:00 AM
		2:30 PM - 10:00 PM
DISNEY VACATION PLANNING	DECK 4, MID	10:00 AM - 8:30 PM
GUEST SERVICES	DECK 3, MID	24 HOURS
HAIR BRADING	DECK 11, MID	9:30 AM - 9:30 PM
MEDICAL HEALTH CENTER	DECK 1, FWD	9:30 AM - 11:00 AM
		4:30 PM - 7:00 PM
PORT SHOPPING DESK	DECK 4, MID	7:30 PM - 8:30 PM
		12:30 PM - 2:30 PM
		5:45 PM - 8:45 PM
SENSSES SPA AND SALON	DECK 11, FWD	8:00 AM - 10:00 PM
SHUTTERS PHOTO GALLERY	DECK 4, MID	9:30 AM - 12:00 PM
		7:30 PM - 11:00 PM
SHUTTERS DIGITAL	DECK 4, MID	9:30 AM - 12:00 PM
		7:30 PM - 11:00 PM
<b>(SHOPPING)</b>		
BIBBIDI BOBBIDI BOUTIQUE	DECK 5, MID	9:00 AM - 9:00 PM
MICKEY'S MAINSAIL	DECK 3, FWD	9:30 AM - 11:00 PM
QUACKS	DECK 11, MID	
SEA TREASURES	DECK 3, FWD	9:30 AM - 11:00 PM
VISTA GALLERY	DECK 4, MID	9:45 AM - 10:30 PM
WHITE CAPS	DECK 3, FWD	9:30 AM - 11:00 PM
WHOZIS & WHATZIS	DECK 11, MID	10:00 AM - 4:00 PM
		7:00 PM - 10:00 PM

**DINNER MENU**  
 Animator's Palate - Pacific Rim Cuisine  
 Enchanted Garden - Continental Market Cuisine  
 Royal Court - French Cuisine  
 Dining Times: 5:45pm & 8:15pm

**DRINK MENU**  
 Captain's Martini  
 High 80's/92/7°C  
 No Alcohol  
 (No Alcohol)  
 (No Alcohol)

**WEATHER FORECAST**  
 Tomorrow: Sunny  
 High: 82/72°C

## DINING & LOUNGES

CABANAS CONTINENTAL	DECK 11, AFT	7:00 AM - 7:30 AM
CABANAS	DECK 11, AFT	7:30 AM - 11:30 AM
ROYAL COURT	DECK 3, MID	8:30 AM - 10:00 AM
<b>LUNCHA</b>		
CABANAS	DECK 11, AFT	11:45 AM - 2:00 PM
FILMORE'S FAVORITES	DECK 11, MID	11:00 AM - 6:30 PM
LUGNIG'S PIZZA	DECK 11, MID	11:00 AM - 6:30 PM
PAUL BOUTIQUE (18+)	DECK 12, AFT	10:00 AM - 12:30 PM
ROYAL COURT	DECK 3, MID	12:00 PM - 1:30 PM
TOW MATER'S GRILL	DECK 11, MID	11:00 AM - 11:00 PM
<b>DINNER</b>		
ANIMATOR'S PALATE	DECK 3, AFT	5:45 PM & 8:15 PM
ENCHANTED GARDEN	DECK 2, MID	5:45 PM & 8:15 PM
ROYAL COURT	DECK 3, MID	5:45 PM & 8:15 PM
CABANAS TABLE SERVICE	DECK 11, AFT	6:30 PM - 8:30 PM
PAUL (18+)	DECK 12, AFT	6:00 PM - 8:30 PM
REMY (18+)	DECK 12, AFT	6:00 PM - 8:30 PM
<b>LATE NIGHT (MARK)</b>		
LA PAZZA (18+)	DECK 4, AFT	10:45 PM - 11:45 PM
LUGNIG'S PIZZA	DECK 11, MID	9:30 PM - 12:00 AM
<b>ADDED ENTERTAINMENT</b>		
BEVERAGE STATION	DECK 11, MID	11:00 AM - 11:00 PM
EYE SCREAM	DECK 11, MID	24 HOURS
ROOM SERVICE	DIAL 0	
<b>ENTERTAINMENT - LOUNGES - BARS</b>		
Adults must be 21 and older to consume alcoholic beverages.		
BON VOYAGE	DECK 3, MID	9:00 AM - 11:00 PM
COVE BAR (18+)	DECK 11, FWD	10:30 AM - 10:30 PM
COVE CAFE (18+)	DECK 11, FWD	6:30 AM - 12:00 AM
CURRENTS (18+)	DECK 13, FWD	10:00 AM - 11:30 PM
D LOUNGE	DECK 4, MID	SHOWTIMES
FROZONE TREATS	DECK 11, MID	10:00 AM - 6:00 PM
LA PAZZA (18+)	DECK 4, AFT	12:00 AM - 12:00 AM
MERIDIAN (18+)	DECK 12, AFT	10:00 AM - 12:00 AM
O'GILLIS PUB (18+ AFTER 9:00 PM)	DECK 4, AFT	12:00 PM - 12:00 AM
OOH LA LA (18+)	DECK 4, AFT	5:30 PM - 12:00 AM
OUTLOOK	DECK 14, MID	
SKYLINE (18+)	DECK 4, AFT	6:00 PM - 12:30 AM
THE TUBE (18+ AFTER 9:00 P.M.)	DECK 4, AFT	7:00 PM - 8:30 PM
VISTA CAFE	DECK 4, MID	9:30 PM - 2:00 AM
WAVES	DECK 12, AFT	10:00 AM - 6:00 PM

Public Health Advisory: Consuming raw or under-cooked meats, poultry, seafood, shellfish, or eggs may increase your risk for food borne illness, especially if you have certain medical conditions.

**GOOFY'S SPORTS**  
**Digital Simulators**

Sports Simulator  
 Golf Simulator  
 Basketball, Baseball, Hockey, Football  
 or Soccer \$13 / half hr. \$22 / hr  
 Reservations can be made at the Port Adventures Desk,  
 Deck 5, Midship or at the Simulators, Deck 13, Aft.